

# **SecuriFire Studio**

## **Installation instructions**

Version: 2.4  
Last update: 21.10.2022

# Installation instructions

---

## Purpose

This document describes the installation of **SecuriFire Studio** version 2.4 step by step.

---

## Precondition

**SecuriFire Studio** can be used only on the following operating systems:

- Windows 8.1
- Windows 10

**.Net Framework** is also required.

## Install SecuriFire Studio

You need administrator rights to install **SecuriFire Studio** on your computer. **WinPcap** is also installed. **WinPcap** is needed for communication with the subcontrol panels.

## Uninstall SecuriFire Studio

Parallel installations of **SecuriFire Studio** are allowed, but only versions of different SRP.

Example 1: Parallel installations R2.3.2/ R2.4.x is possible

Example 2: Parallel installations R2.4.4 / R2.4.7 is not possible

In Example 2, the **SecuriFire Studio** release R2.4.4 must be uninstalled before installing R2.4.7

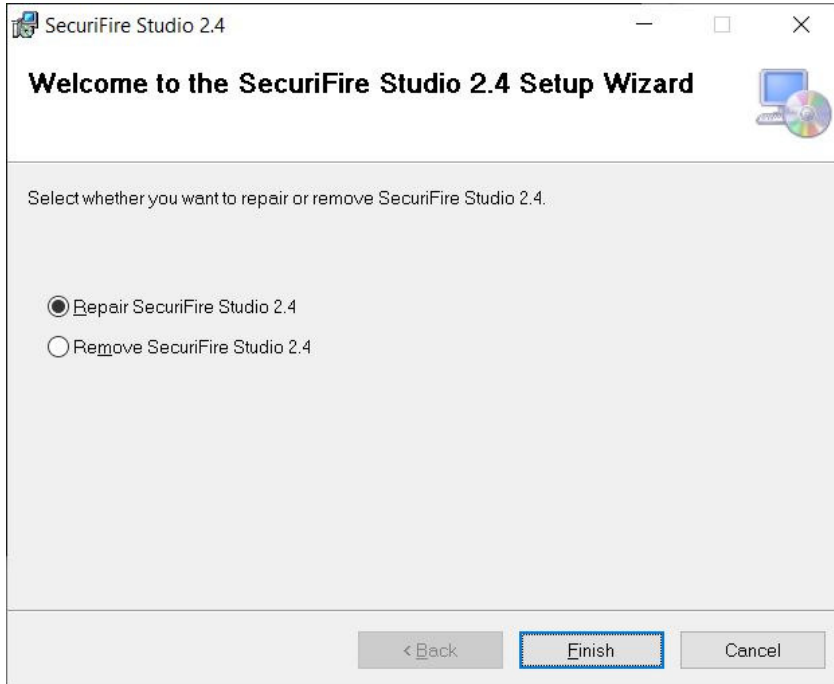
Uninstalling the **SecuriFire Studio** is made via the Control Panel.

## Start setup

Double-click **setup.exe** to start the **SecuriFire Studio** installation. The installation program launches. If a Windows security warning appears, click **Execute**. If **.Net Framework** is not yet installed on your computer, the installation program will be launched. Follow the instructions, and after it is installed launch setup again.

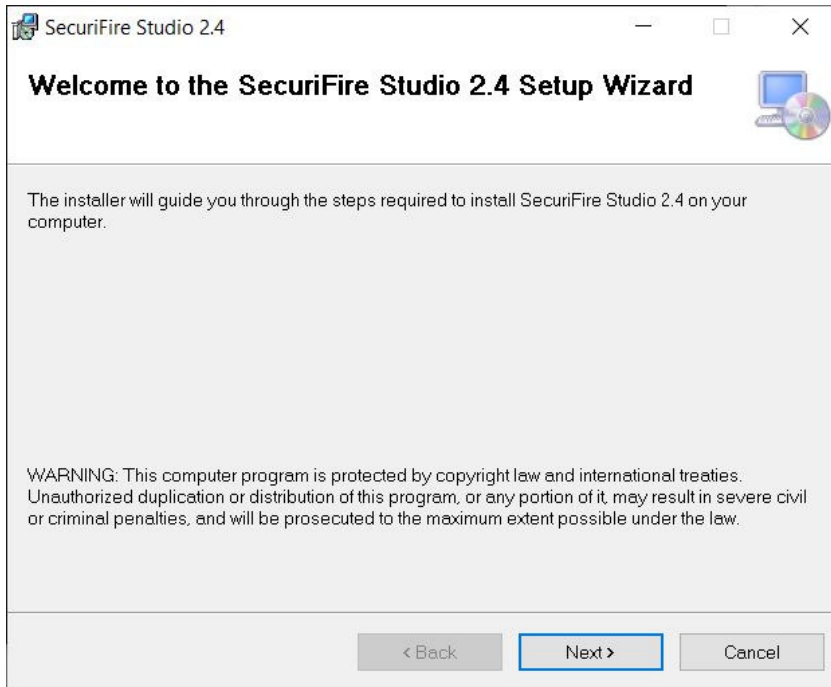
## SecuriFire Studio is already installed

This dialog appears only if an identical version of **SecuriFire Studio** is already installed. The old version must first be removed. Click **Remove SecuriFire Studio** and then **Finish**. SecuriFire Studio will be removed from your computer. Click **setup.exe** again to restart the **SecuriFire Studio** installation.



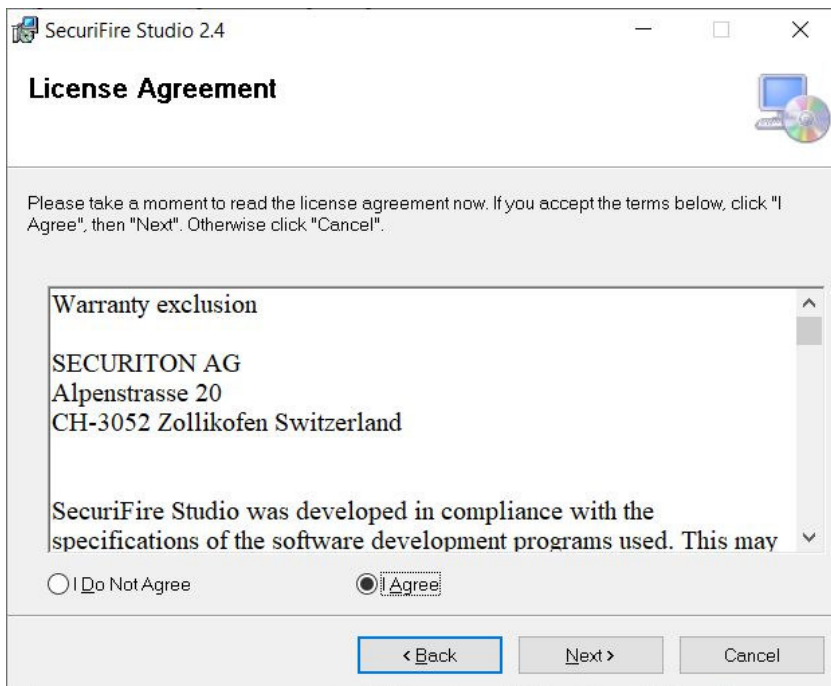
## Install SecuriFire Studio

Now the actual installation of **SecuriFire Studio** begins. Click **Next**.



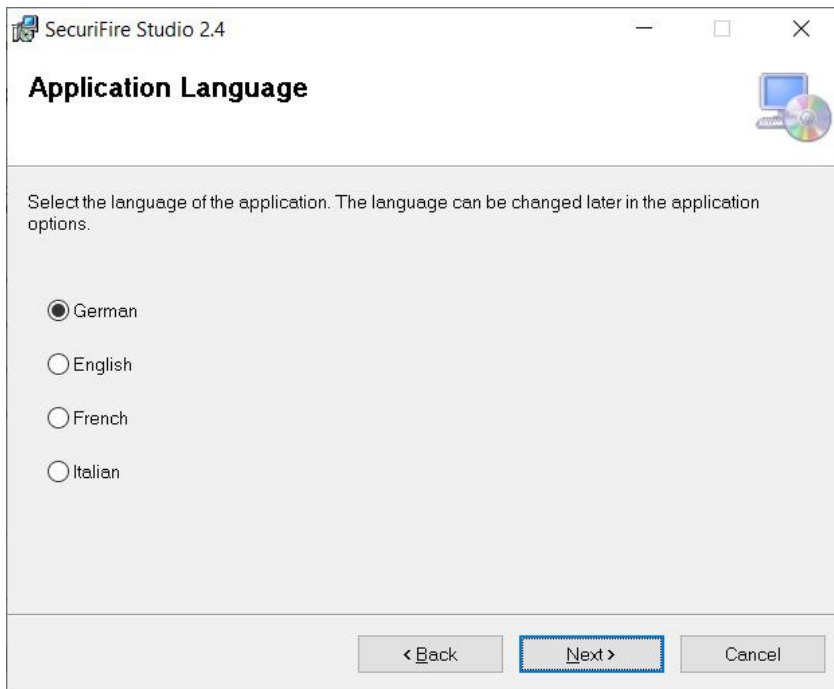
## Accept license agreement

In the next step the license agreement and warranty exclusion appear. Please read the text carefully and then click **I Agree** to accept the agreement. Click **Next** to continue the installation.



## Select SecuriFire language

Select the language with which you want to start **SecuriFire Studio**. The language can be changed later in the **SecuriFire Studio** options. Click **Next** to continue to the next step.



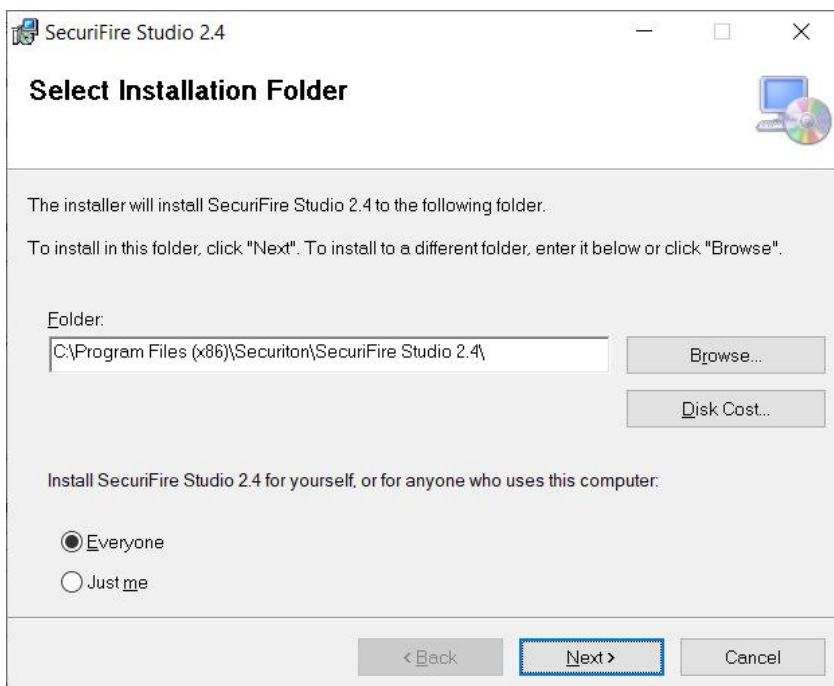
## Select installation path

You can change the installation folder if you want. To install **SecuriFire Studio** in a different folder, click **Browse...** and select the folder where you want to install it.

With **Disk Cost...** you can check which drive has sufficient space for the installation.

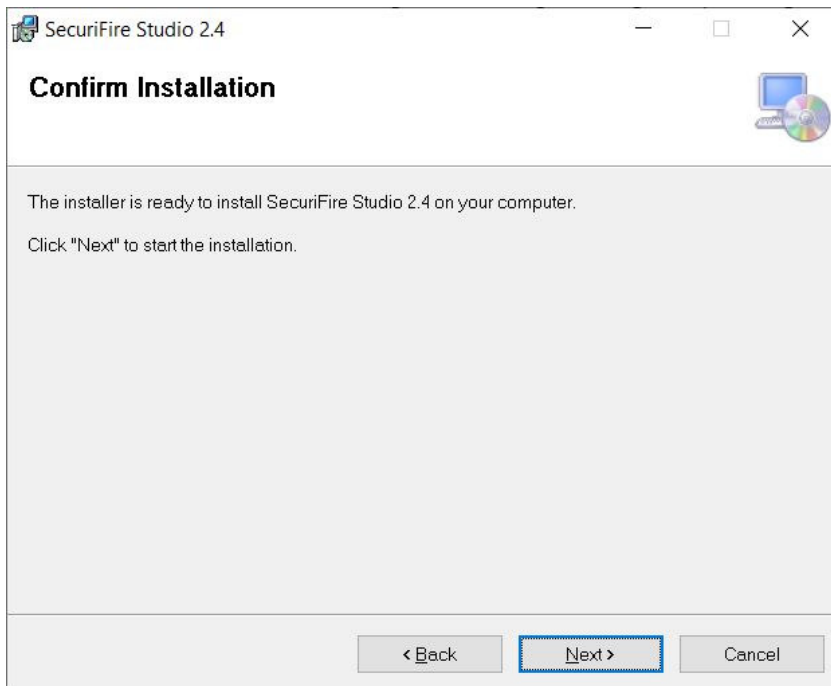
You can also specify whether **SecuriFire Studio** should be installed for all users (**Everyone**) or only for the user who is currently logged in (**Just me**).

Click **Next** to continue the installation.



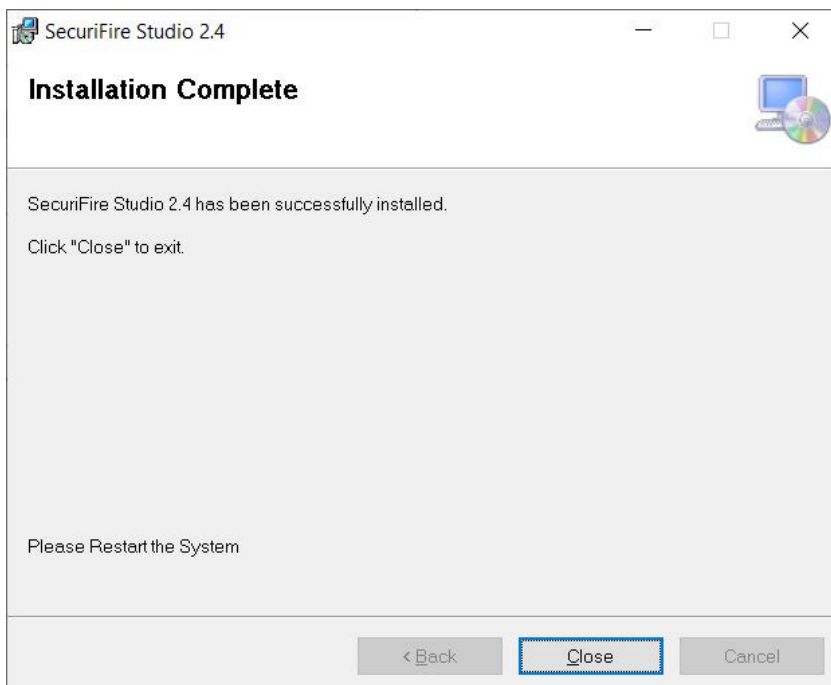
## Start installation

To begin the installation with the above settings, confirm with **Next**. **SecuriFire Studio** will be installed. This may take a few moments.



## Complete installation

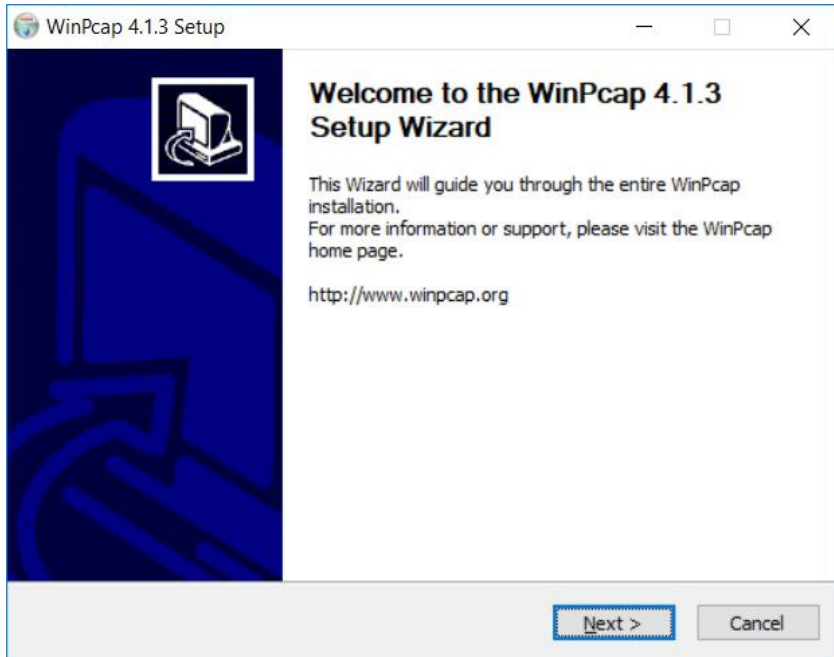
**SecuriFire Studio** is now fully installed. Click **Close** to complete the installation.



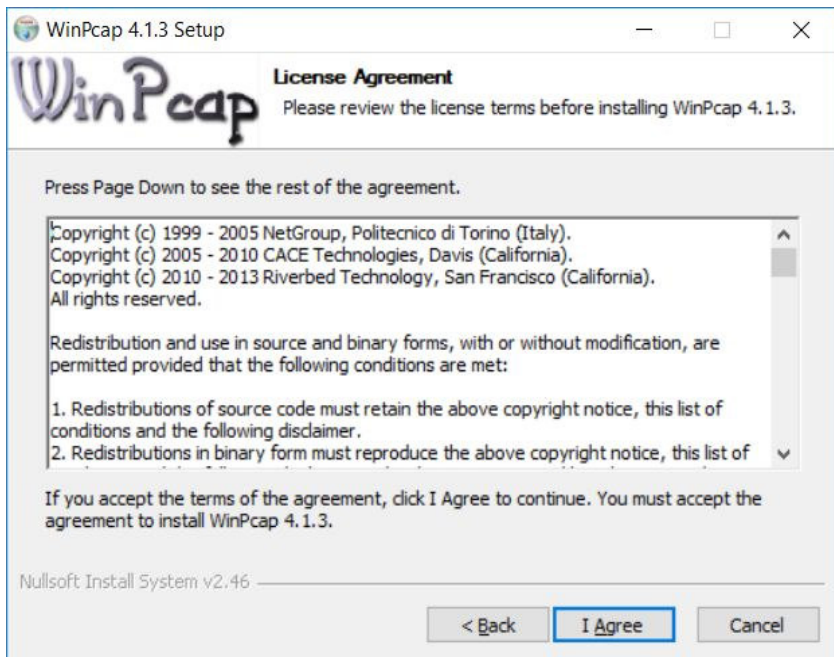
## Install WinPcap

If it is not yet installed, **WinPcap** will be installed.

Click **Next** again.

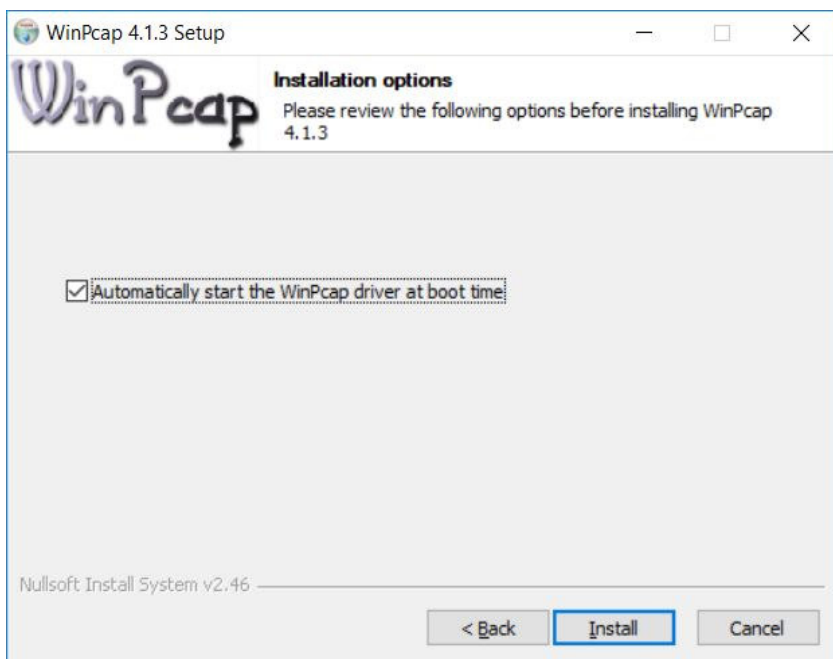


Read the **WinPcap** license agreement and click **I Agree** to accept.

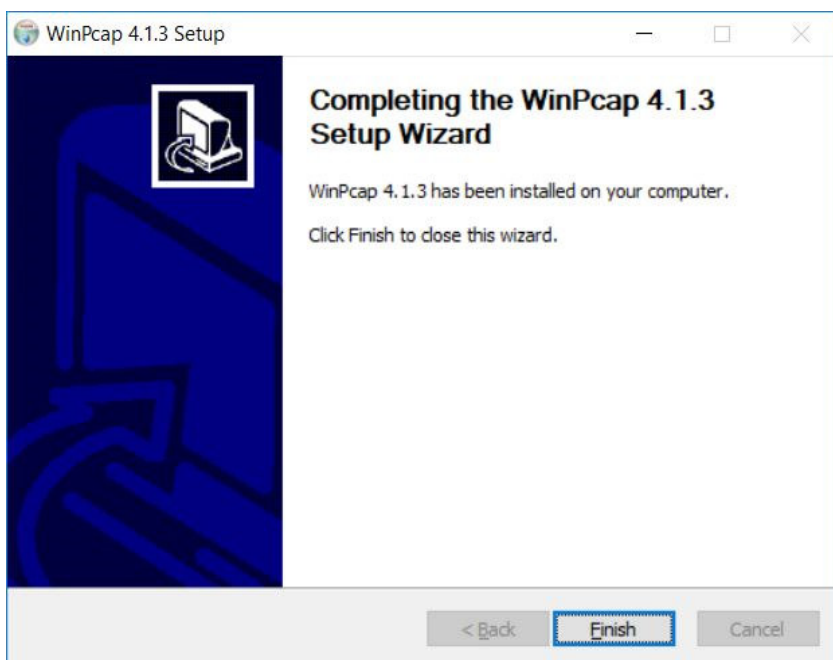




Click **Install**. WinPcap will be installed.



To complete the **WinPcap** installation, click **Finish**.



## Restart the computer

For **SecuriFire Studio** to work correctly, the system must be restarted.